







## The Pryors, East Heath Road, Hampstead NW3

An elegant, beautifully refurbished, 4 bedroom ground floor apartment, set in one of Hampstead's most prestigious purpose built blocks.

The property benefits from high ceilings, beautiful features and enjoys the use of landscaped communal gardens adjacent to Hampstead Heath; a resident porter, passenger lifts and off-street parking for one car.

Double reception room/dining room • 22' master bedroom suite including ensuite shower room • 3 further double bedrooms • kitchen • bathroom • guest cloakroom • store room • off street parking for one car • EPC Rating D

The Pryors is next to Hampstead Heath, London's largest natural green space, and is located a short walk from boutiques, delicatessens, neighbourhood restaurants & and the popular Everyman Cinema in Hampstead Village. Local shops and Marks & Spencer are also a short stroll, in South End Green.

The closest London Underground station is Hampstead (Northern Line) is 0.4 miles (0.65 km), approximately a 7 minute walk. The Hampstead Heath London Overground Station is 0.5 miles (0.8 km), approximately a 9 minute walk, from where travel to Canary Wharf requires a single change.

£1,650 per week. Unfurnished.



















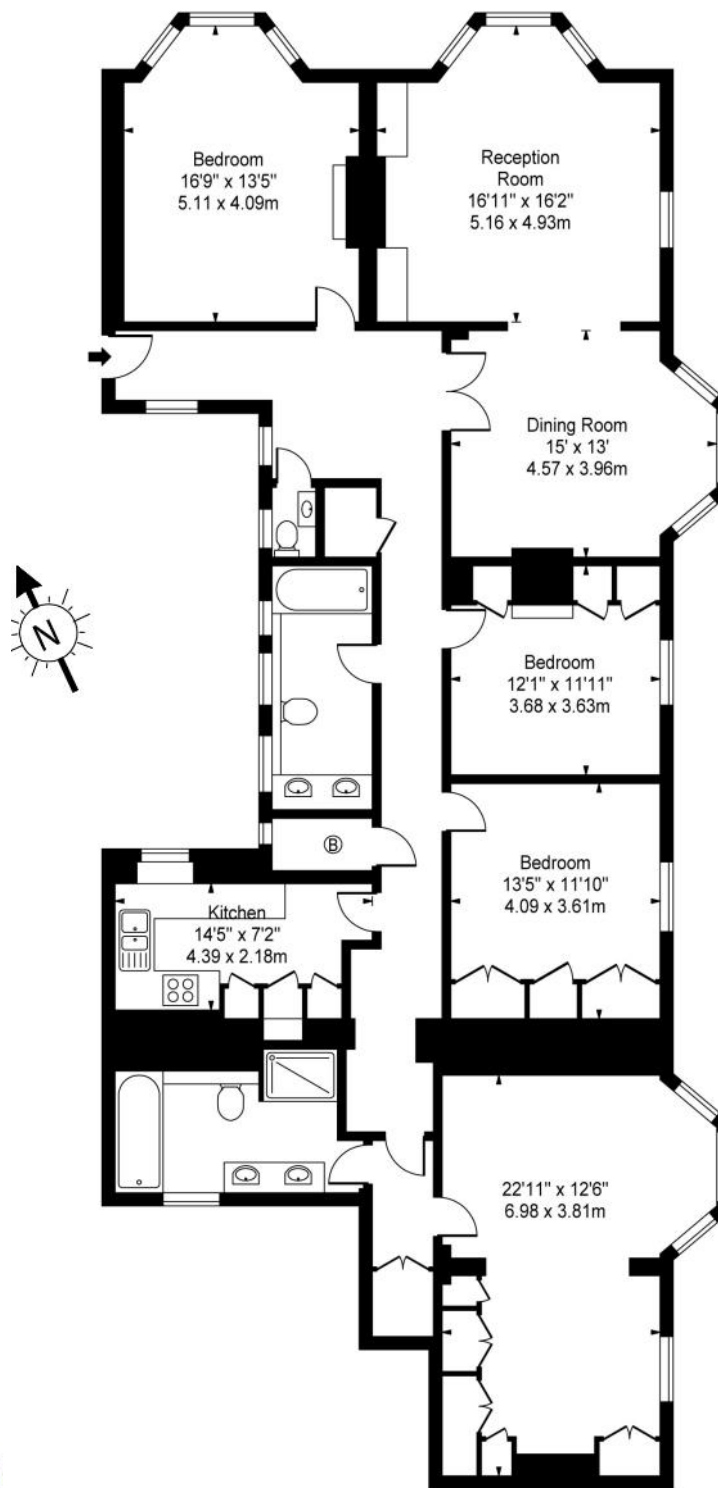










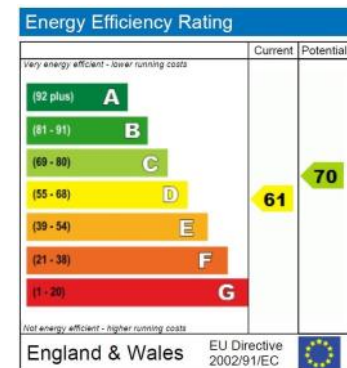


Ground Floor

Approx. Gross Internal Area  
**2,065 Sq Ft - 191.84 Sq M**  
Including restricted heights

For Illustration Purposes Only - Not to Scale  
Floor Plan by [www.nogaphotostudio.com](http://www.nogaphotostudio.com)

This floor plan should be used as a general outline for guidance only.  
Any intending purchaser or lessee should satisfy themselves by inspection, searches, enquiries and full survey as to the correctness of each statement.  
Any areas, measurements or distances quoted are approximate and should not be used to value a property or be the basis of any sale or let.



Telephone 020 7794 7794



Ombudsman  
Services



6 South Hill Park, London NW3 2SB | [sales@amberden.co.uk](mailto:sales@amberden.co.uk)

